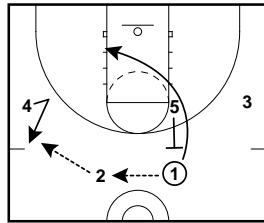
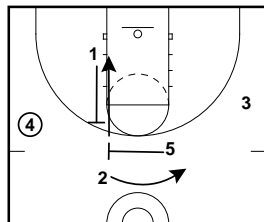


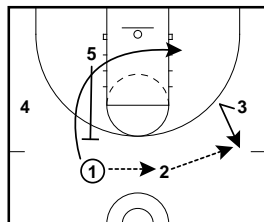
Chin Continuity



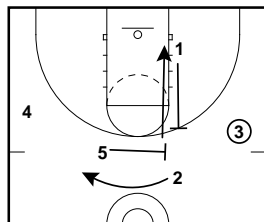
The offense begins with a Guard to Guard entry. The Post (5) sets a backscreen for the guard (1), who flashes to the ballside block. The ballside forward (4) v-cuts to get open.



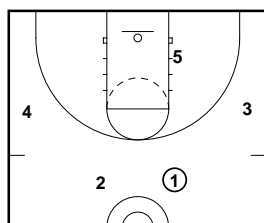
5 sets a flare screen for 2. 1 sets a "little-on-big" backscreen for the 5. 1 flashes to top.



The offense is then reinitiated on the left side of the floor.



The offense continues in the same pattern.



After the pattern has been run on both sides of the floor, players should return to their initial set-up.