



Figure 1:

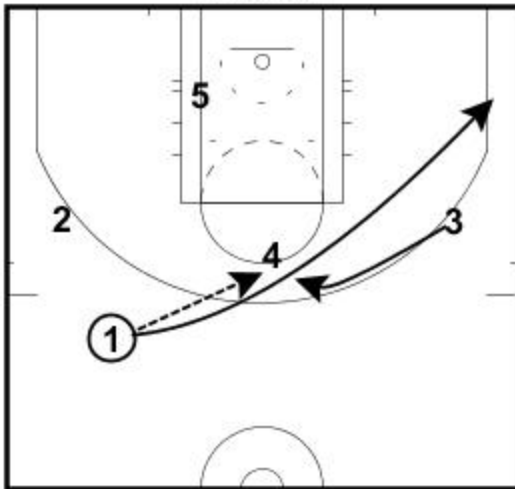


Figure 2:

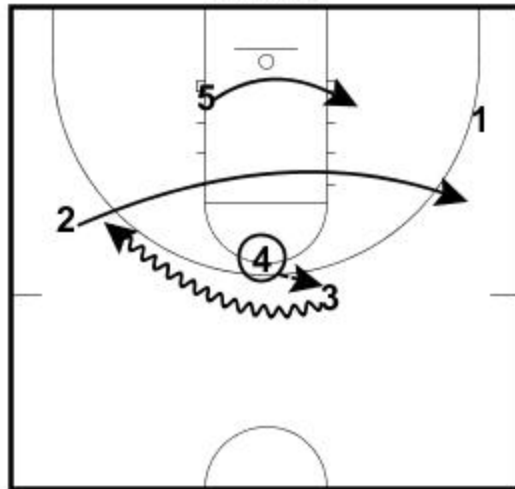


Figure 3:



MIAMI HEAT P/R ACTION

Figure 1: (1) passes to (4) and cuts to the opposite corner. (3) then cuts hard to the ball for a dribble handoff from (4).

Figure 2: As (3) gets set to receive the ball from (4), (2) cuts hard to the opposite wing. (3) looks to turn the corner and attack the rim.

Figure 3: If (3) does not have an available drive to the basket or a pass inside to the (5), (4) will set a side ball screen for (3).