



Lost City of the Legion

New discoveries on the site of the Roman fortress at Caerleon



How do Archaeologists know where to dig?

- Mapping and survey (geophysics)
- Reading ancient texts about Wales and Welsh people e.g. Roman historian Tacitus
- Examining previous excavation records



magnetometer



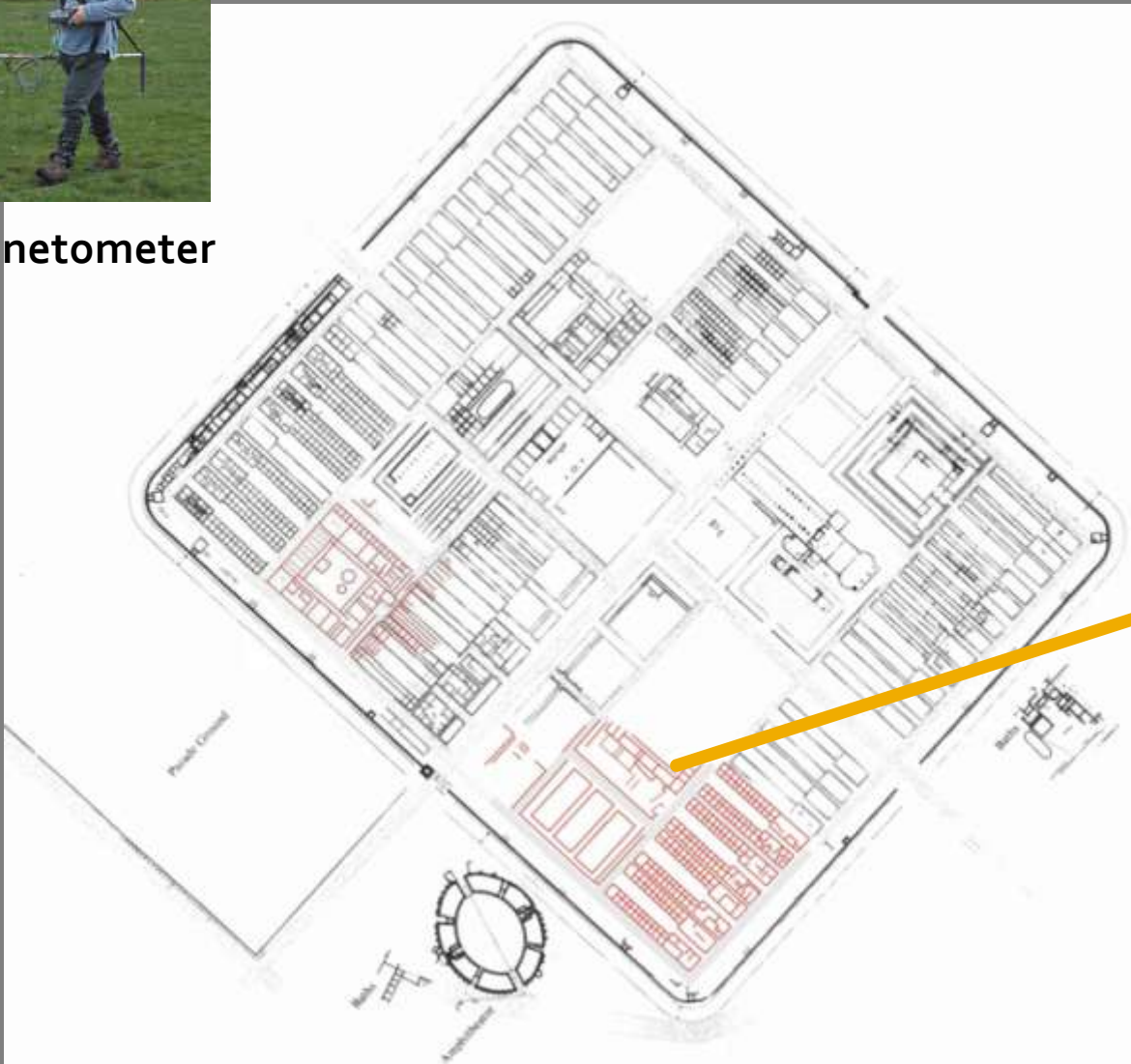
Excavations by Mortimer Wheeler in the 1920s



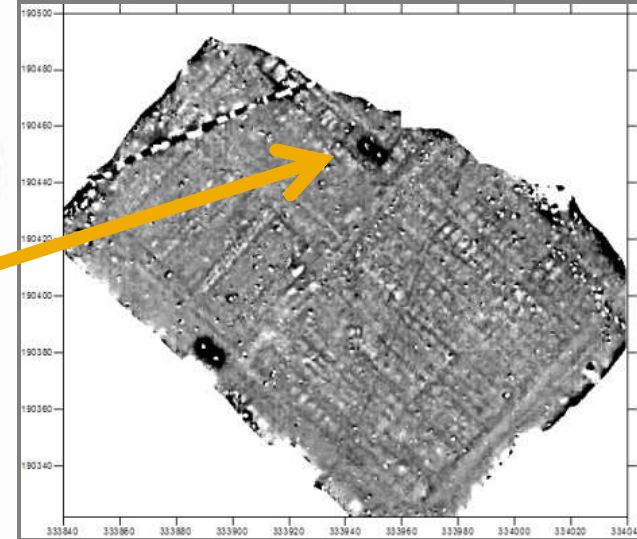
Caerleon Roman Fortress (*Isca*)



magnetometer



Barrack Blocks
Granaries
Storehouses
Large Metal Workshop



Magnetometry Results of
Large Storeroom

How do archaeologists dig?

- Tools: Trowel, mattock, pickaxe, spade, shovel for excavating trenches, pits etc
- Also brushes, dental picks for detailed work e.g. Excavating skeletons



The mattock



The trowel



Archaeological
"Finds" or artefacts



Brushes for excavating
skeletons

Excavating a legionary store

- Excavations revealed: main entrance, guardroom, possible stairway and 4 small square storerooms



Reconstruction of storeroom



Excavation underway of storeroom

Recording



photography



- Archaeologists then have to record everything that they find, as once it has been dug up, it can never be dug in the same way again!
- Each feature is drawn, Photographed and described



Drawing section of trench



Armour and other finds in the storehouse



Segmented Plated body armour
(*lorica segmentata*)



Ceremonial bronze scale armour

Other metal "small finds"



Dolphin brooch



Minerva goddess



Chape (end) of dagger



Strap end of belt



Ring made of carnelian with stone!



Enamelled star brooch



Lion pommel

A new monumental suburb

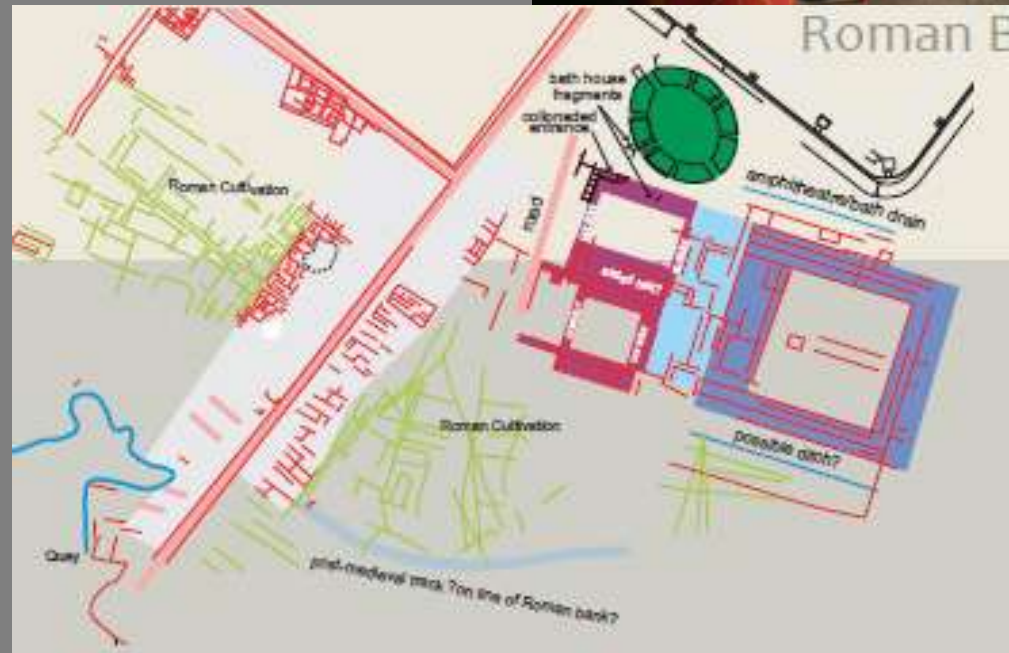


So why were the Romans in South Wales and what new things did they bring?



The Romans Brought:

- Markets and trade
- Bath houses
- mass produced Pottery and metalworking
- New Religion and gods
- Amphitheatres
- Coins
- Large towns and forts



But, the Romans came to South Wales to conquer and control the local tribe "the *Silures*"